



Color Camera

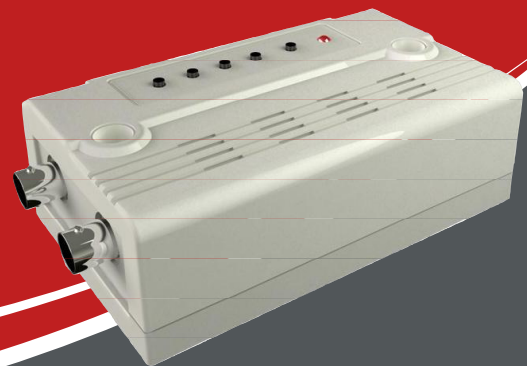
LHC-540N

540TVL, Day & Night, DSS

duoCon™ Remote OSD Controller LOC-100C

duoCon™ Remote OSD &
Zoom* Controller

*selected auto focus zoom cameras only



FEATURES

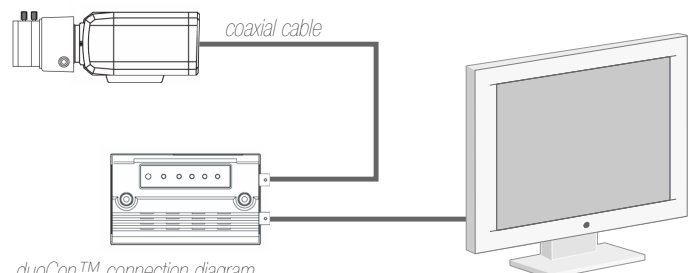
- 410K Pixel 1/3" Interline Transfer Type Sony CCD
- High Resolution (More than 540HTVL Equivalent)
- Selectable Languages (English, German, French)
- Digital Day & Night, 4 Privacy Zone Control
- Built-in OSD (On Screen Display) Menu
- Motion Detection C / CS Mount
- Place Setup for easier setting
(Indoor, Outdoor, Normal, Customs, Fluorescent)

FEATURES

- 1CH Remote Controller for "duoCon™" Camera
- Controls Camera OSD by using its Buttons
- Controls Zoom and Focus by the Buttons in using AF Zoom Camera
- Communication Distance: (RG59 Coaxial Cable: up to 1000ft, RG11 or RG6: up to 2000ft)
- Compatible cameras: LHC-540NOC, LHC-5230NZOC, LHC-5223NZOC

duoCon™ is a technology that provides dual communication between camera and controller by transmitting video and data signal via coaxial cable.

With duoCon™ Controller you can check the status of camera's OSD data and change the camera settings remotely. You can also control zoom and focus on supported AF Zoom Cameras.



duoCon™ connection diagram

Specifications are subject to change without notice